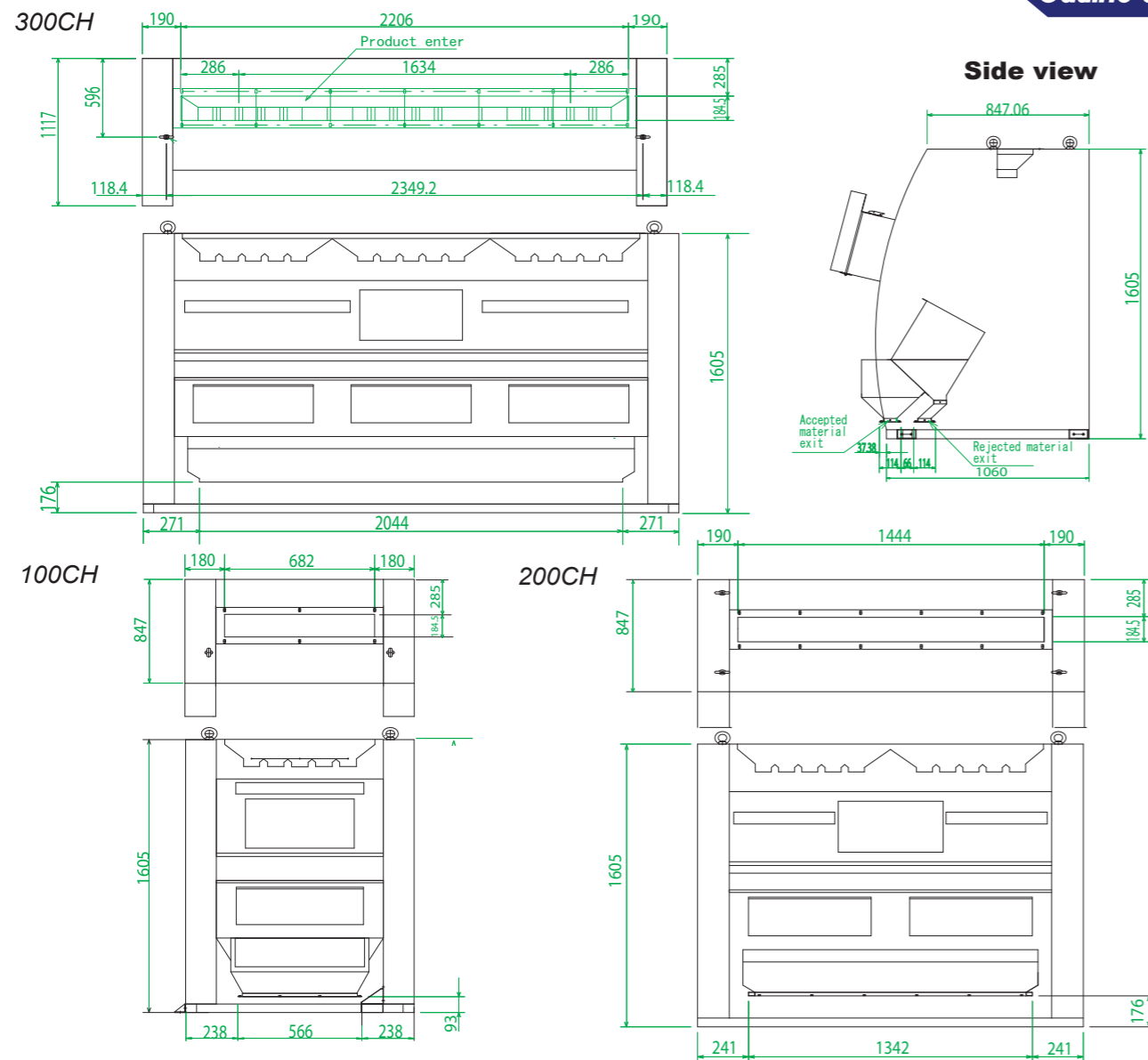


Outline drawings



【Specification】

Model	C L-4. 8W C L- 6W	CSL-4. 8W CSL- 6W	C L-9. 6W C L-12W	CSL-9. 6W CSL-12W	C L-14. 4W C L- 18W	CSL-14. 4W CSL- 18W
Channel	100 ch 4.8W : Secondly sort setting 6W : Primary sort		200 ch 9.6W : Secondly sort setting 12W : Primary sort		300 ch 14.4W : Secondly sort setting 18W : Primary sort	
Main power	200V 10A	200V 12A	200V 20A	200V 25A	200V 25A	200V 30A
Dimensions	(W) 1042mm x (D) 1353mm x (H) 1605mm		(W) 1824mm x (D) 1353mm x (H) 1605mm		(W) 2586mm x (D) 1353mm x (H) 1605mm	
Weight	400kg.	430kg.	670kg.	700kg.	1020kg	1080kg
Maximum throughput	Secondarily sort setting : 4. 8t/h Primary sort : 6t/h		Secondarily sort setting : 9. 6t/h Primary sort : 12t/h		Secondarily sort setting : 14. 4t/h Primary sort : 18t/h	
Compressor capacity	2. 2kw ~ 7. 5kw		5. 5kw ~ 15kw		7. 5kw ~ 22kw	
Dust cleaner capacity	0. 4kw ~ 0. 75kw		0. 75kw ~ 1. 5kw		1. 5kw ~ 3. 7kw	
Main use	White rice, Wheat, Buckwheat, Sesame etc.					

- ※ Air compressor, air drier and dust cleaner are optional parts.
- ※ Process capacity changes with the condition of materials and sorting.
- ※ Air compressor capacity and dust cleaner capacity will change depends on materials.
- ※ Improvement may be made and specifications may change without notice.

Quality Control Sorting Machine

Absolute Color

CL-4.8W / 6W / 9.6W / 12W / 14.4W / 18W

Quality Control Sorting Machine with foreign substance reject function loading

Absolute Color-GR

CSL-4.8W / 6W / 9.6W / 12W / 14.4W / 18W



MODEL CSL-9.6W

Quality Control Sorting Machine High Definition

Point 1 Product accuracy and yield increased

4.5mm pitch type chute / In-house manufactured Ejector / CMOS sensor

Point 2 Many functions loading

Gradually start function / Magnet for metal removal / mode memory function

Point 3 Environmentally friendly

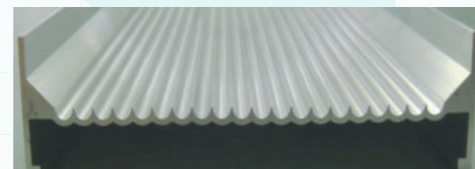
LED display / Stainless steel construction (parts contact with grain)

Chute

The length of rice is 5mm on an average, therefore sometimes rice flow sideways at 9mm chute. Active' s 4.5mm pitch chute, rice flows only lengthways. It aligns each grain and flows faster than before.



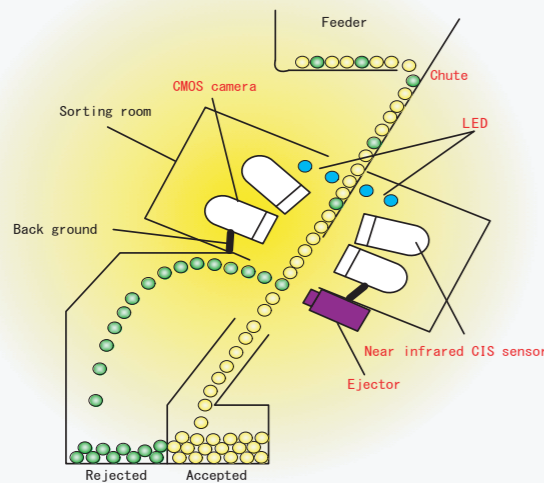
9mm pitch chute



4.5mm pitch chute

CMOS Camera

【Structure of Sorting Machine】



The CMOS camera technology accumulated with the digital camera was applied, and low electric power and high speed improvement were realized.

It contributes to the monitor performance, compact space and multichannel.

By the good-light design by original technology, the grain surface is uniformly illuminated on real time.

Color grain sorting will sort out the small black spot without overlooking. Also at chalky sorting, preeminent sorting capability and performance can be demonstrated without dropping the amount of flow.

Equipped with CMOS Line Scan Camera

COLOR LED (R·G·B+W)

Uniform Brightness



Absolute sorter is the industry' s first Color sorter equipped with CMOS Line Scan Camera

- CMOS Line Scan Camera detects the small foreign substance.
- Processing capacity increased.
- Due to the CMOS Line Scan Camera has little outbreak of the heat, superior in environmental stability.
- No vertical smearing

Outline

- Power saving and miniaturization
- High processing capacity

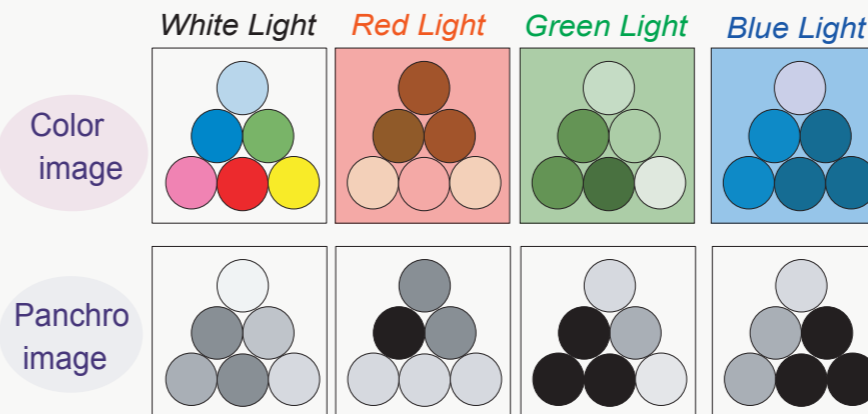
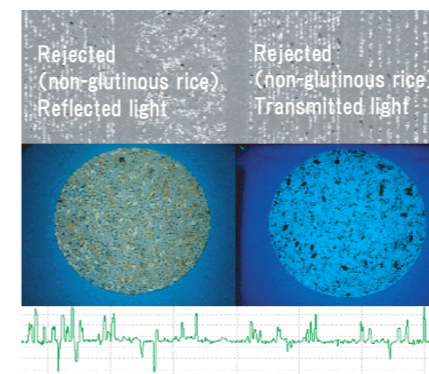
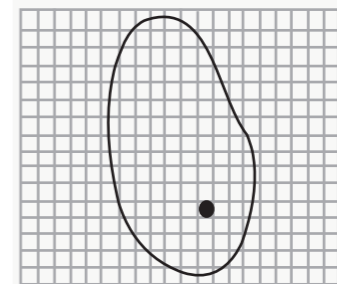


Image detection



High resolution (4096 bit)

High speed reading (40MHzx4TAP)

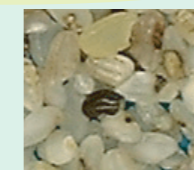


Sorting Sample

Sorting of White rice

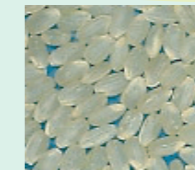


Accepted

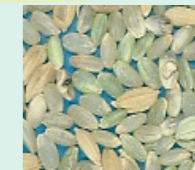


Rejected

Sorting of Brown rice



Accepted



Rejected

Foreign Substances



Glasses, stones etc.